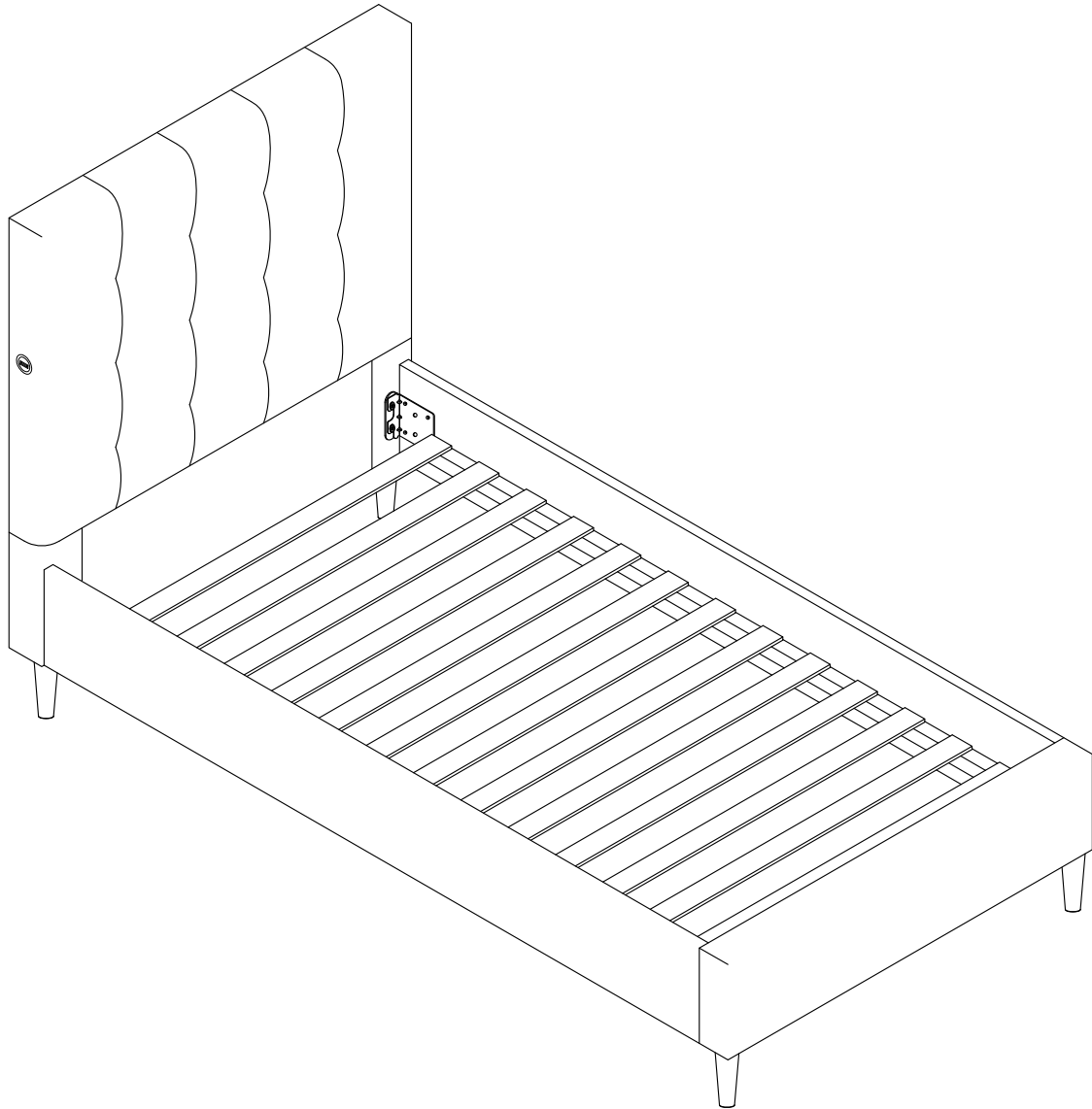
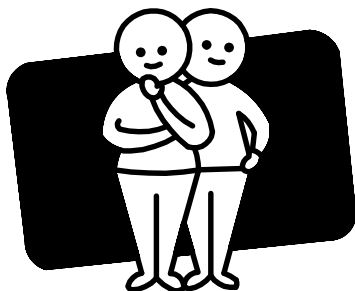


# OMF

Version 1.0



TWO PEOPLE



REQUIRED

# MASON

SINGLE BED

Enjoy  
Your purchase From

**OMU**

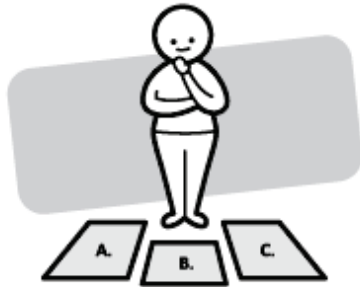
# Assembly checklist



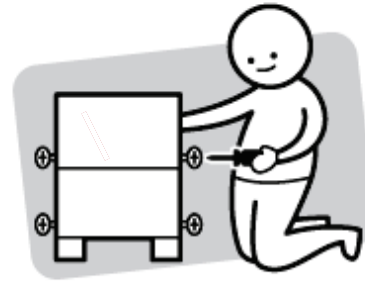
Read through the instructions carefully before you begin.



Make sure you have all the required tools. Never use power tools unless instructed.



Identify and lay out all of the components before you begin assembly.



Unless instructed, do not fully tighten screws until the item is fully assembled.

## Useful Information

- ! Never use power tools unless specifically instructed. They can damage your components or hardware if used incorrectly.
- ! The most common mistakes made during assembly are using the wrong hardware or getting components back to front.
- ! Always use a soft surface (such as carpet or cardboard) when assembling your product to avoid scratching or damaging the surface of the product.
- ! Bulky items such as wardrobes and bunk beds should be assembled in the room they will be used in as they may not fit through a door once assembled.
- ! Never use any glue until you are certain that the parts belong together.
- ! Periodically check and re-tighten all fasteners. Check the product care label or website for product care instructions.
- ! If you are having any difficulties assembling your product, missing any hardware or components please visit our website Help Centre for further assistance.

# What you need

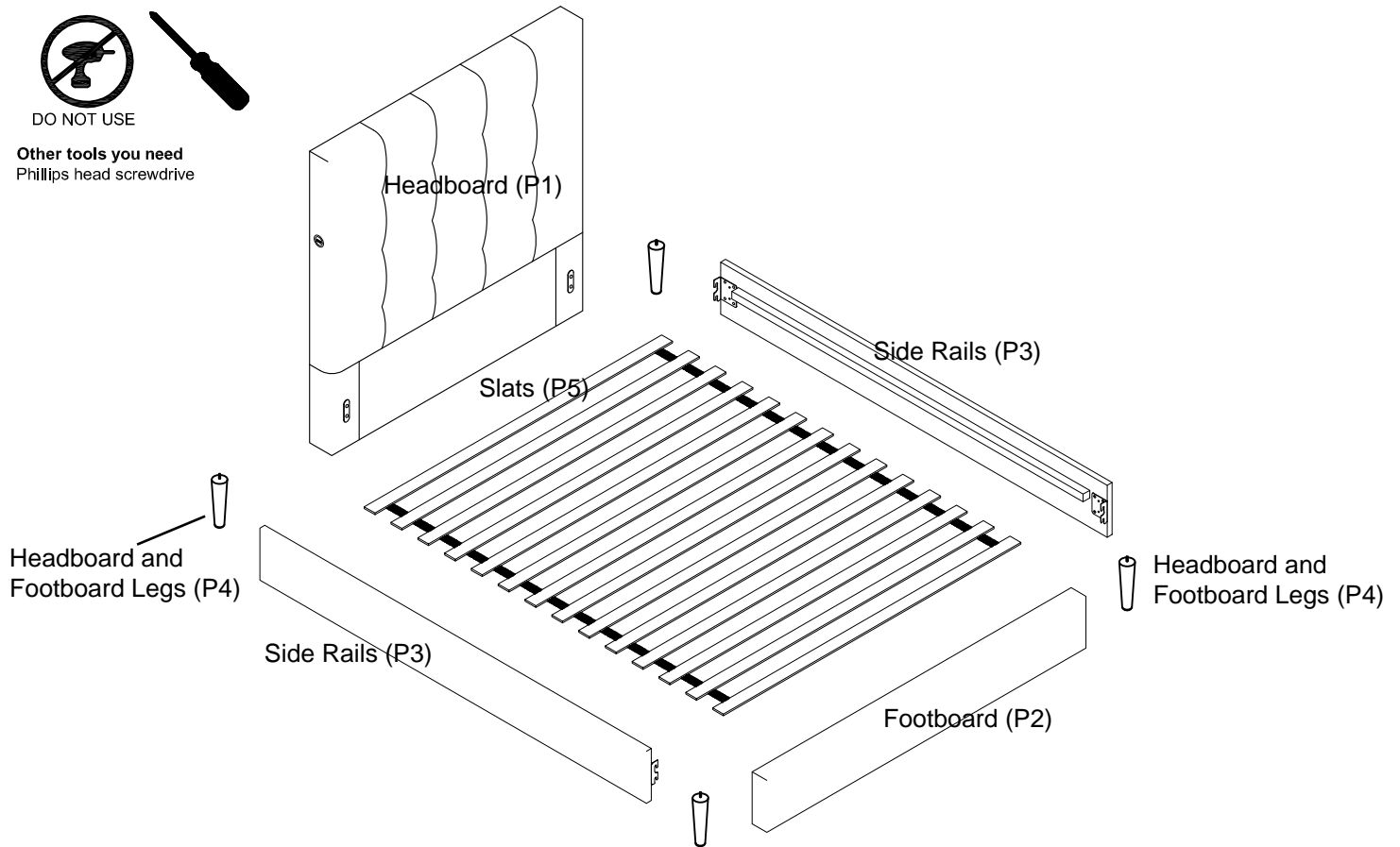
## to assemble the product



DO NOT USE



Other tools you need  
Phillips head screwdriver



### Parts list

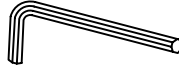
**Box 1** : Footboard (P2) ; Side Rails (P3) ; Headboard and Footboard Legs (P4) ; Hardware Pack

**Box 2** : Headboard (P1)

**Box 3** : Slats (P5)



(Big Head Bolts)  
8 x M8 x 18mm  
(H1)



(Allen Key)  
1 x M5  
(H2)

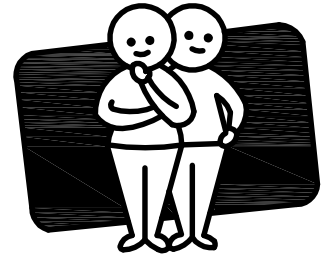


(Screws)  
26 x M4 x 32mm  
(H3)

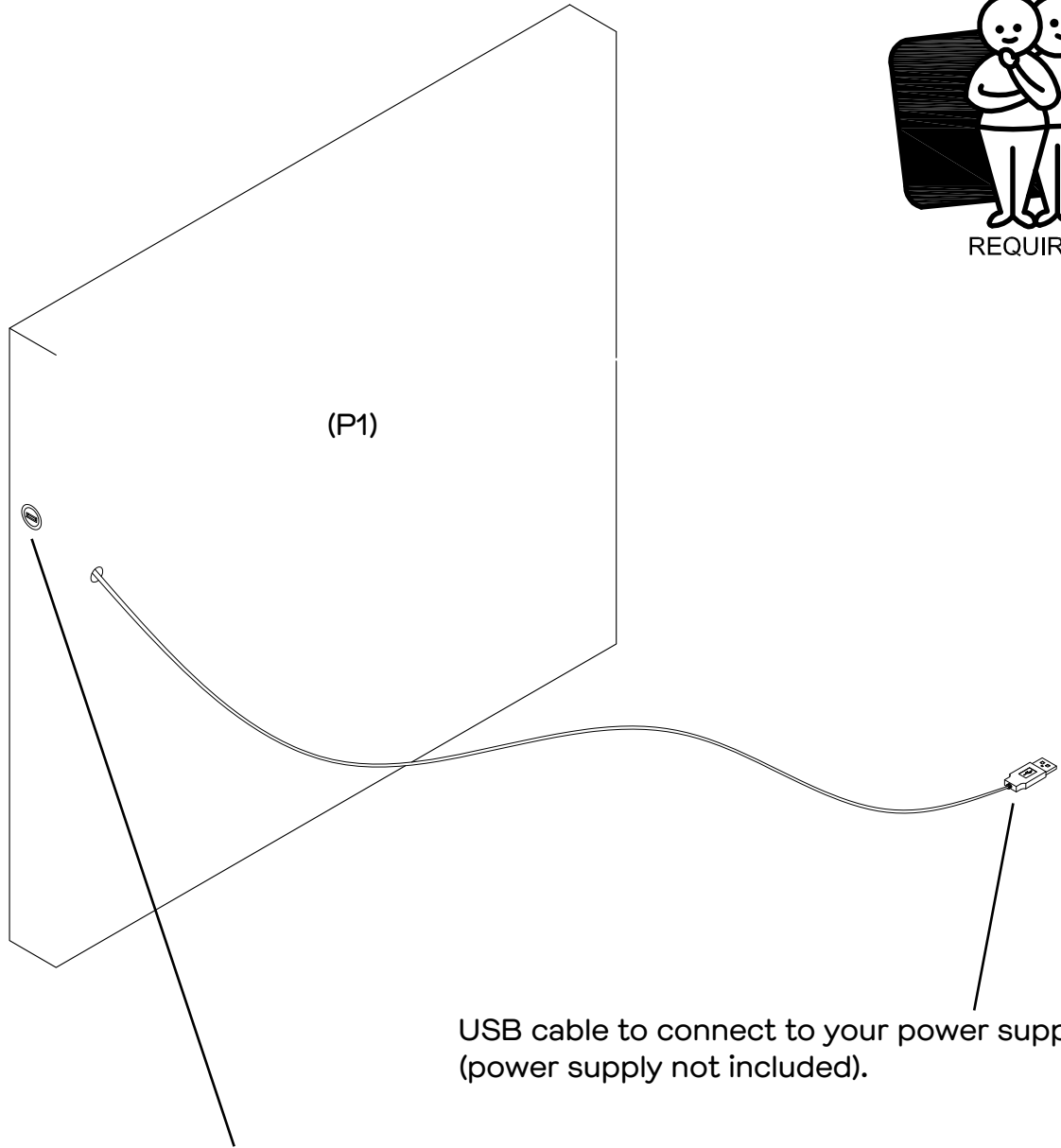
**Please make sure you have all these parts before you start**

# Step 1

TWO PEOPLE



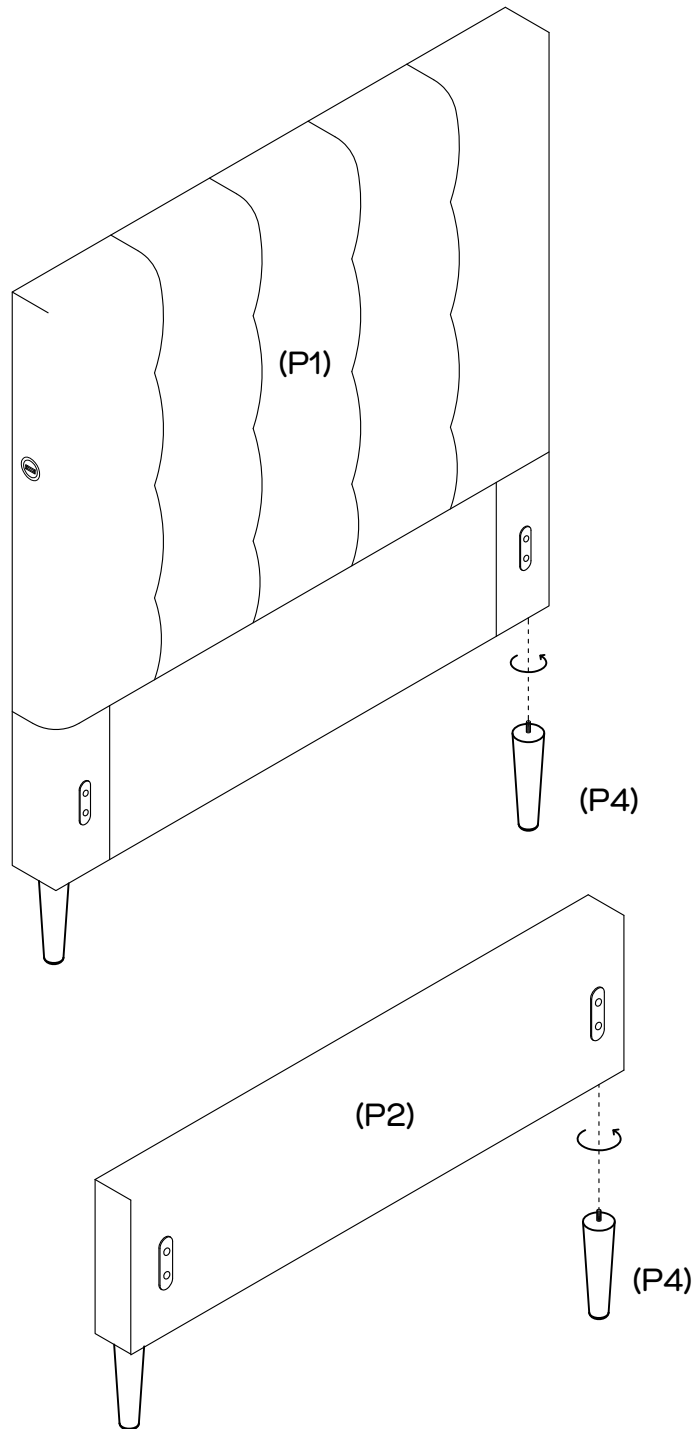
REQUIRED



USB cable to connect to your power supply (power supply not included).



The USB portal can be used to charge your device (USB cable not included).

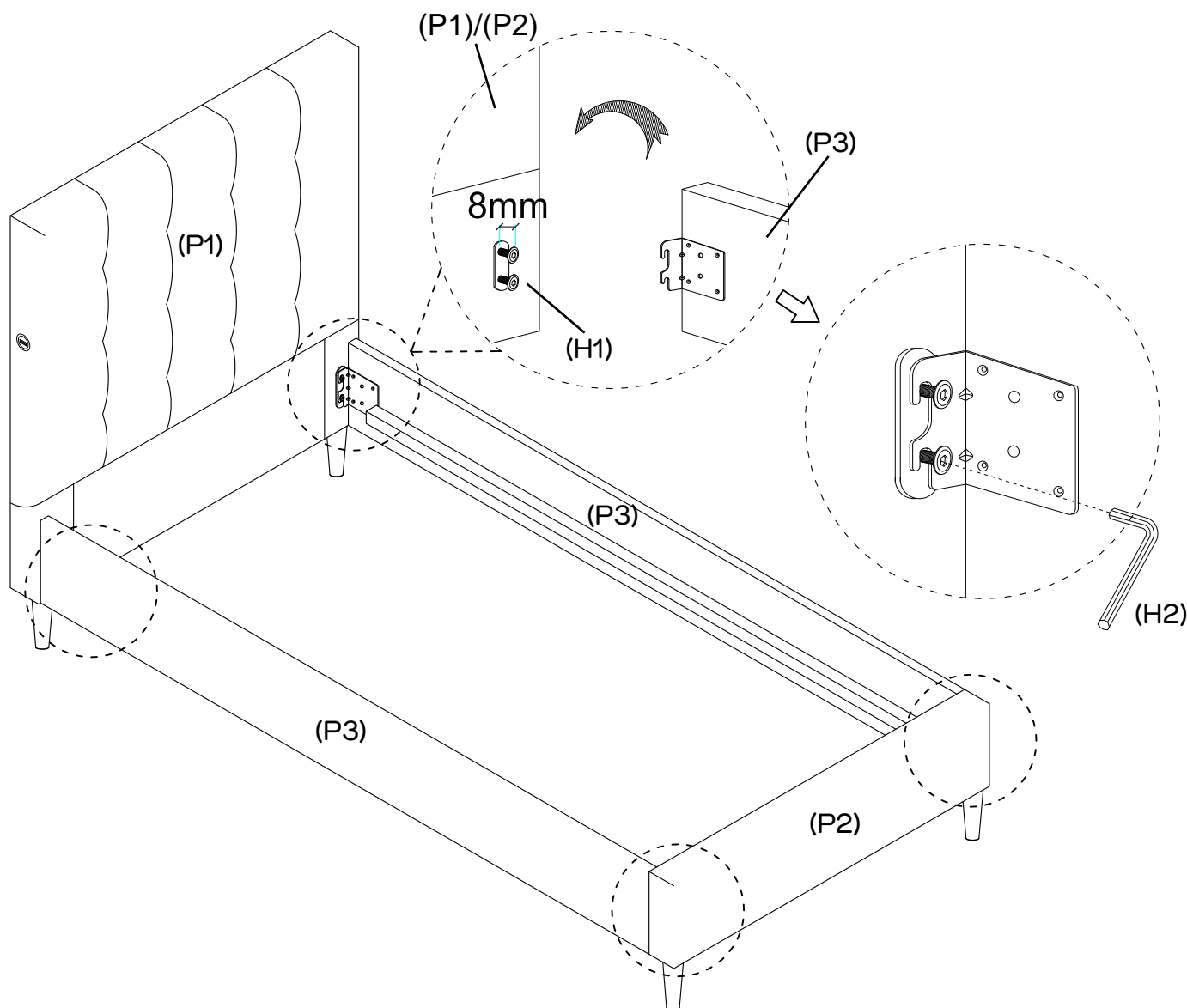
## Step 2



Attach 2 x legs (P4) to the bottom of headboard (P1) ,rotate the legs until they are fully tightened.  
Attach 2 x legs (P4) to the bottom of footboard (P2) ,rotate the legs until they are fully tightened.

# Step 3

You will need	
	
8 x Big Head Bolts 18mm (H1)	Allen Key (H2)



Install 8 x big head bolts (H1) to the brackets of the headboard (P1) and footboard (P2) by using allen key (H2) as shown, do not tighten the bolts and keep them 8mm loose. Then attach side rails (P3) to headboard (P1) and footboard (P2) by slotting the bracket over the bolt as shown. Please full tighten bolts now.

# Step 4

You will need



Allen Key  
(H2)

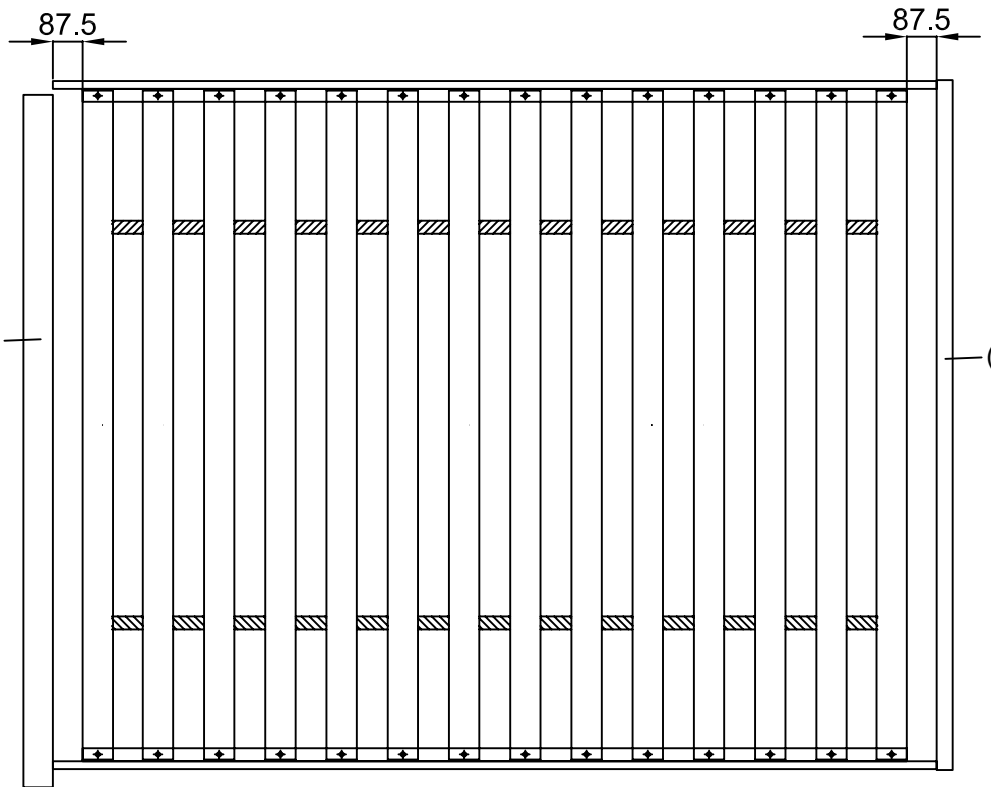


26 x Screws  
(H3)

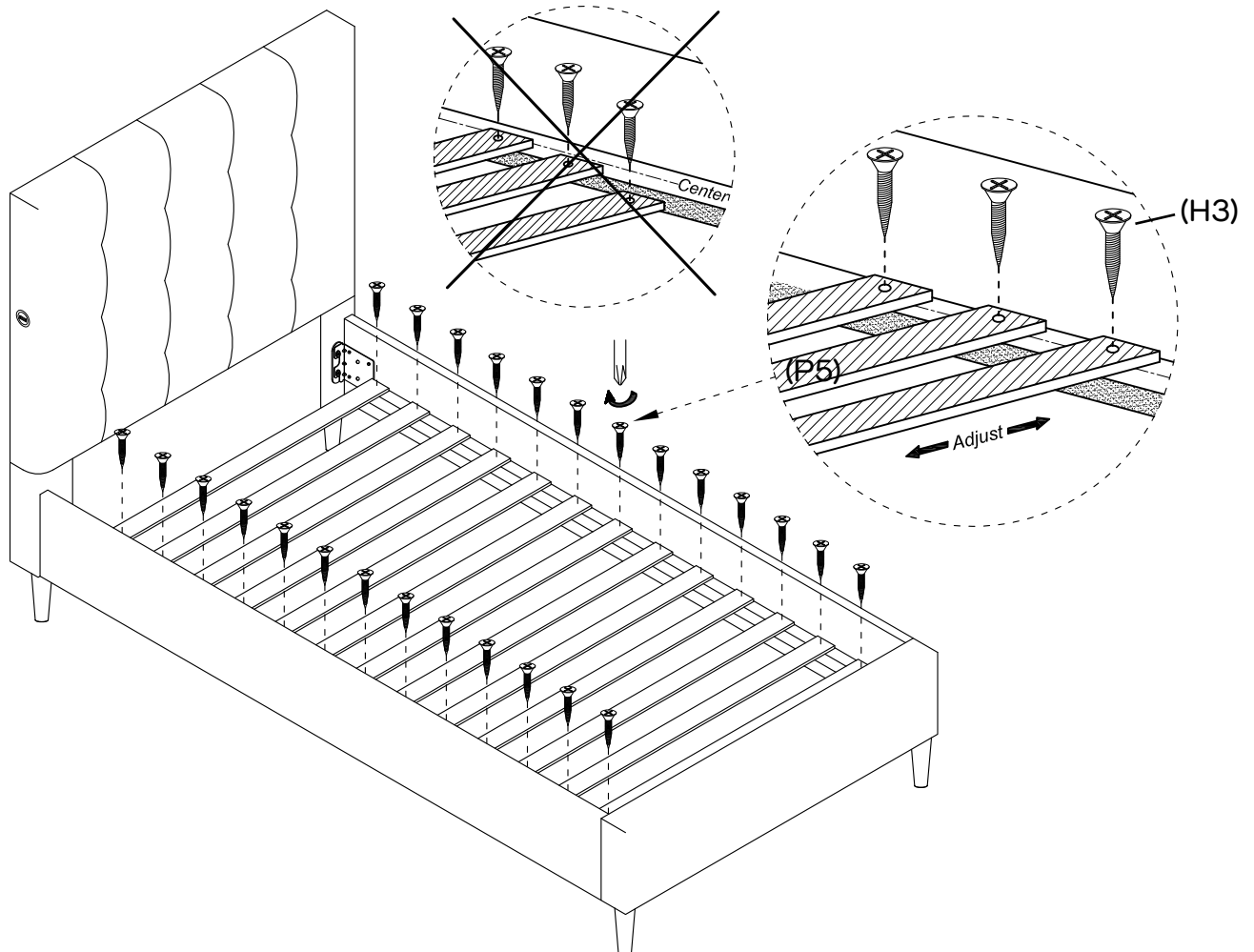


Phillips head screwdriver  
(not provided)

(P1)



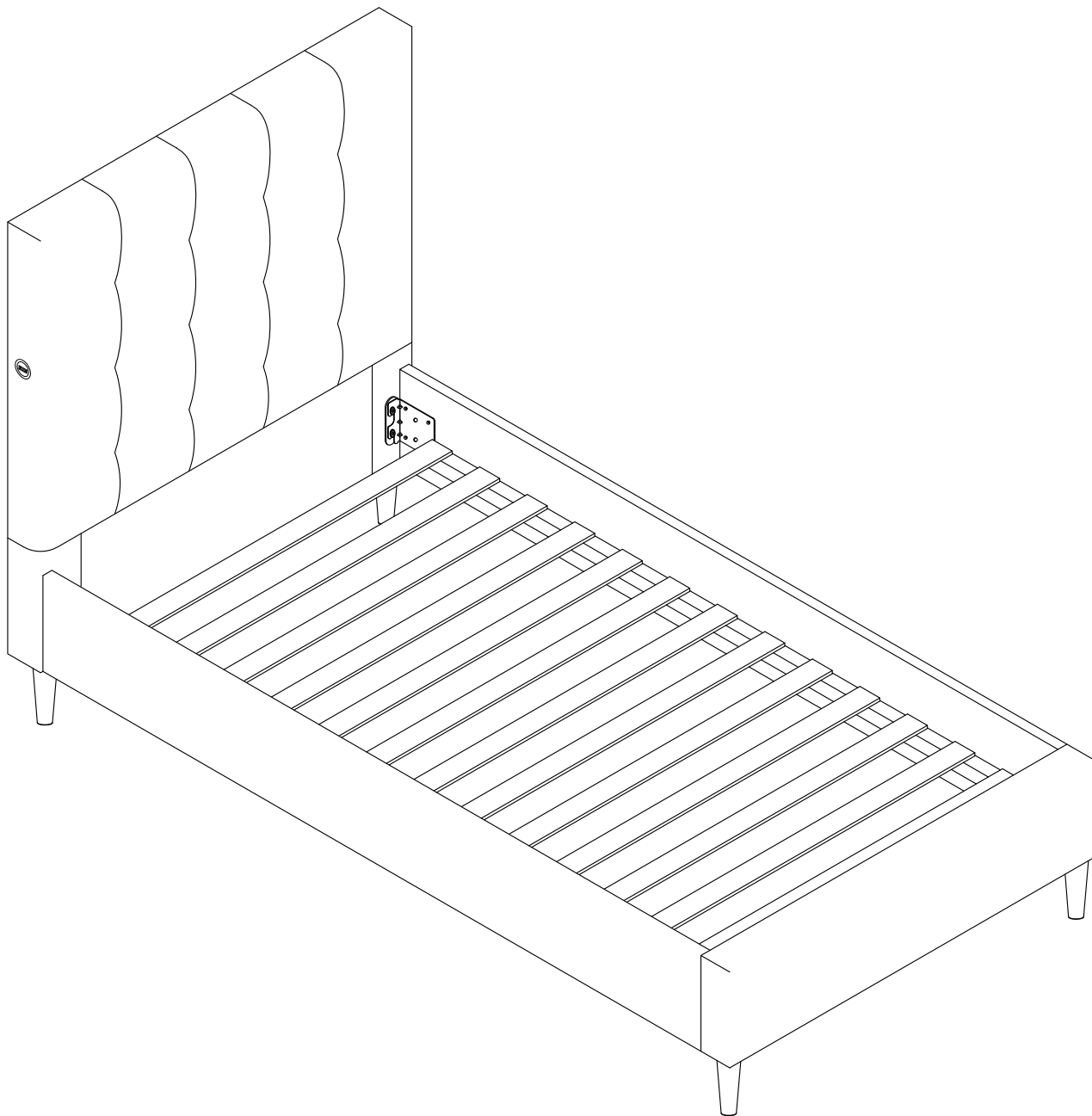
(P2)



Make sure the inner space is square.

Then assemble all the slats (P5) down by using 26 x screws (H3).

## Step 5



## Job Complete

In the interest of our environment please dispose of all packaging thoughtfully.