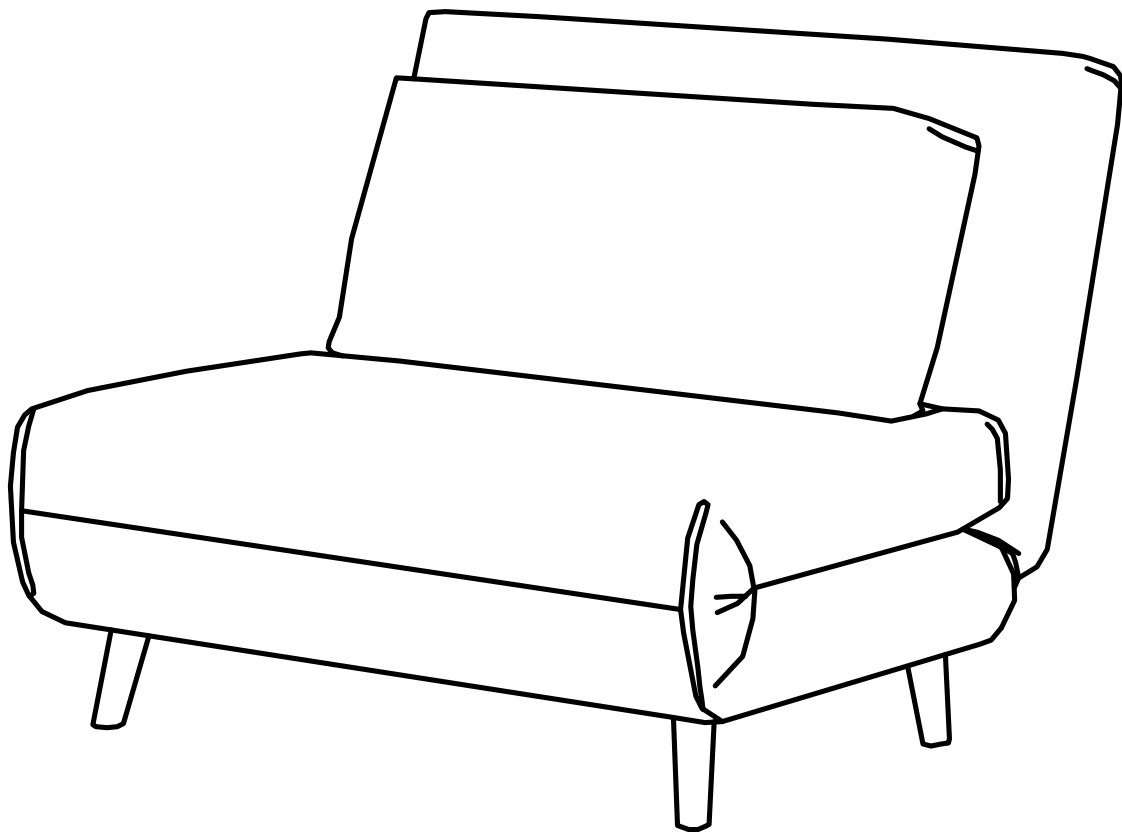
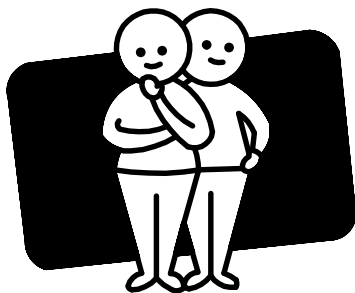


# OMF

Version 1.0



TWO PEOPLE



REQUIRED

# RELAX

SINGLE SOFA BED

Enjoy  
Your purchase From

**OML**

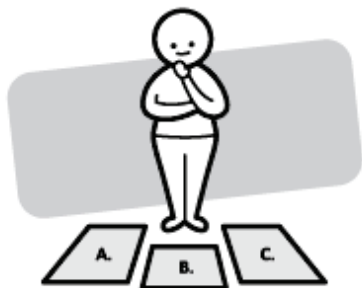
# Assembly checklist



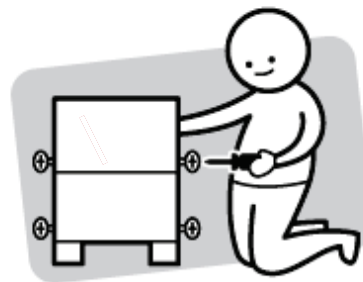
Read through the instructions carefully before you begin.



Make sure you have all the required tools. Never use power tools unless instructed.



Identify and lay out all of the components before you begin assembly.



Unless instructed, do not fully tighten screws until the item is fully assembled.

## Useful Information

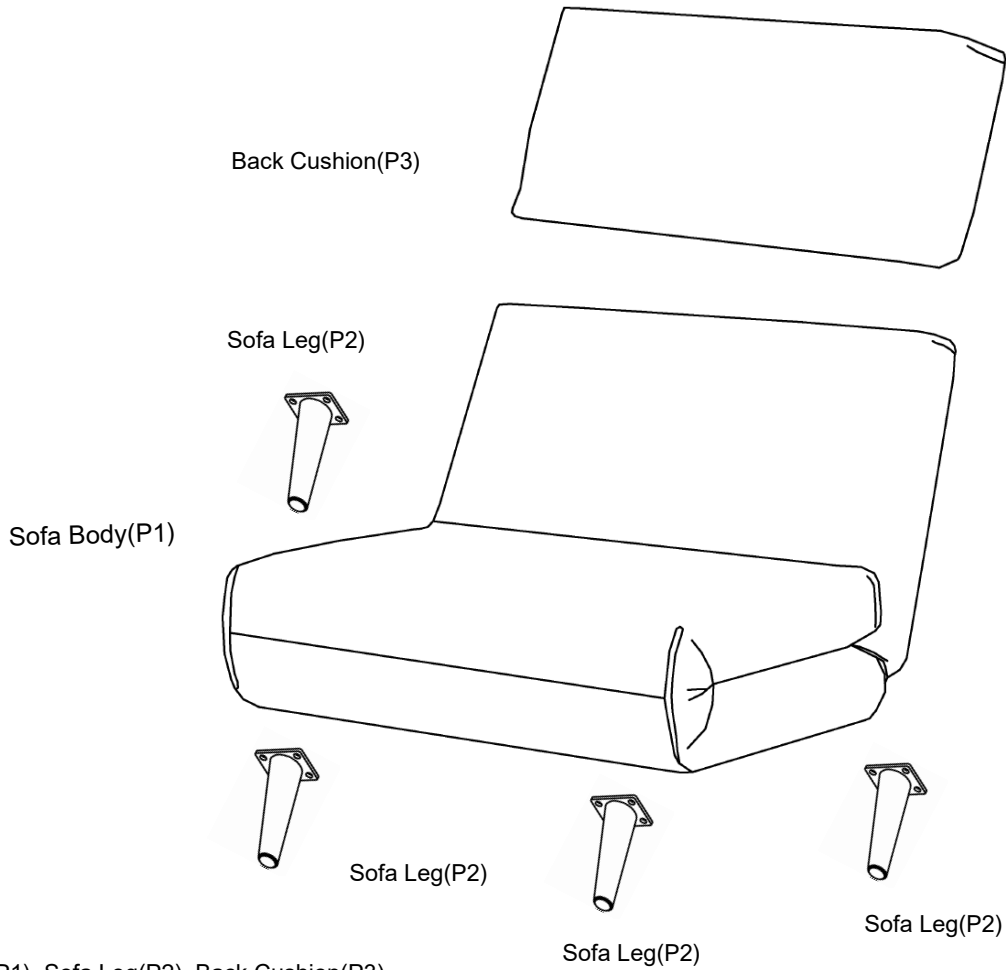
- ! Never use power tools unless specifically instructed. They can damage your components or hardware if used incorrectly.
- ! The most common mistakes made during assembly are using the wrong hardware or getting components back to front.
- ! Always use a soft surface (such as carpet or cardboard) when assembling your product to avoid scratching or damaging the surface of the product.
- ! Bulky items such as wardrobes and bunk beds should be assembled in the room they will be used in as they may not fit through a door once assembled.
- ! Never use any glue until you are certain that the parts belong together.
- ! Periodically check and re-tighten all fasteners. Check the product care label or website for product care instructions.
- ! If you are having any difficulties assembling your product, missing any hardware or components please visit our website Help Centre for further assistance.

# What you need

## to assemble the product



DO NOT USE



### Parts list

**Box 1** : Sofa Body(P1), Sofa Leg(P2), Back Cushion(P3),



(Screws )

16 x M6 x 20mm

(H1)



(Allen Key)

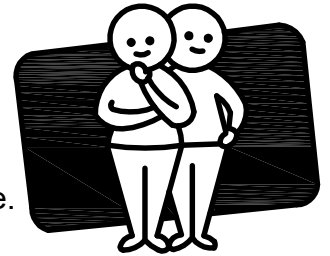
1 x M5

(H2)

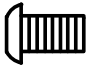

**Please make sure you have all these parts before you start**

# Step 1

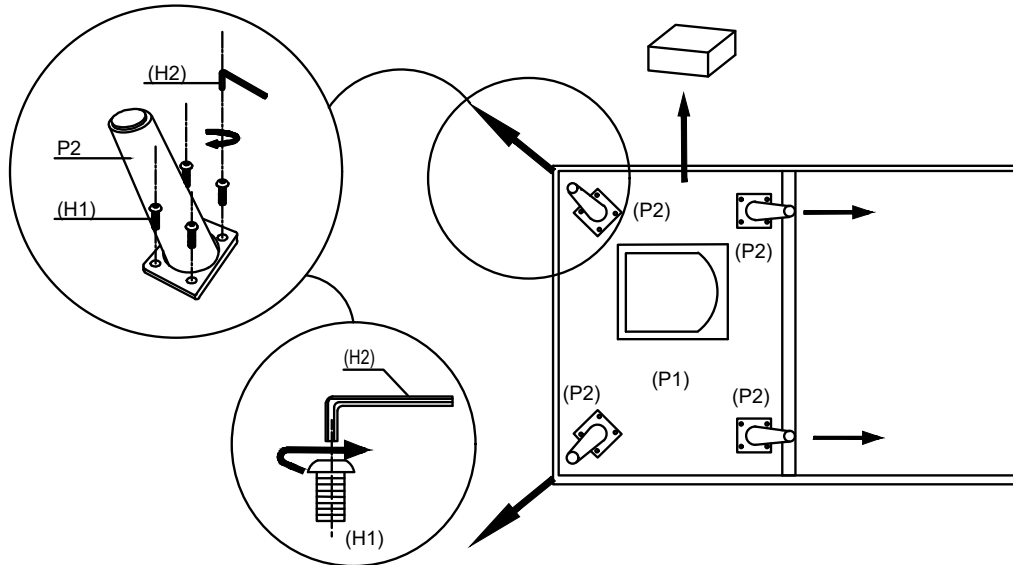
TWO PEOPLE



REQUIRED

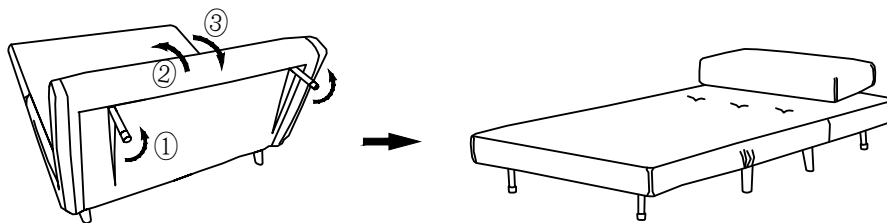
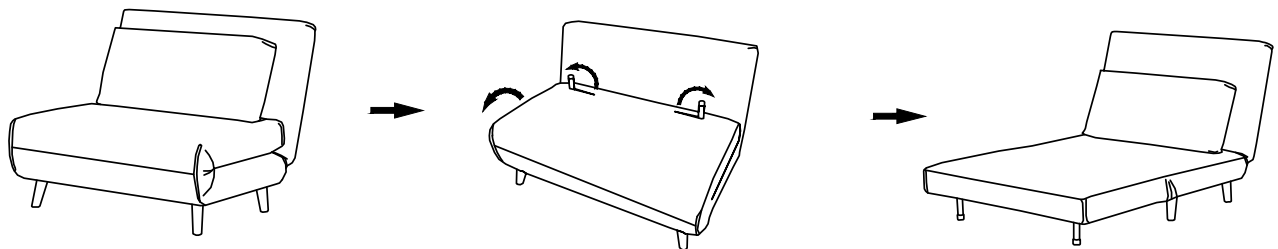
You will need	
 16xScrews 20mm (H1)	 Allen Key (H2)

Retrieve the legs from inside the sofa base.



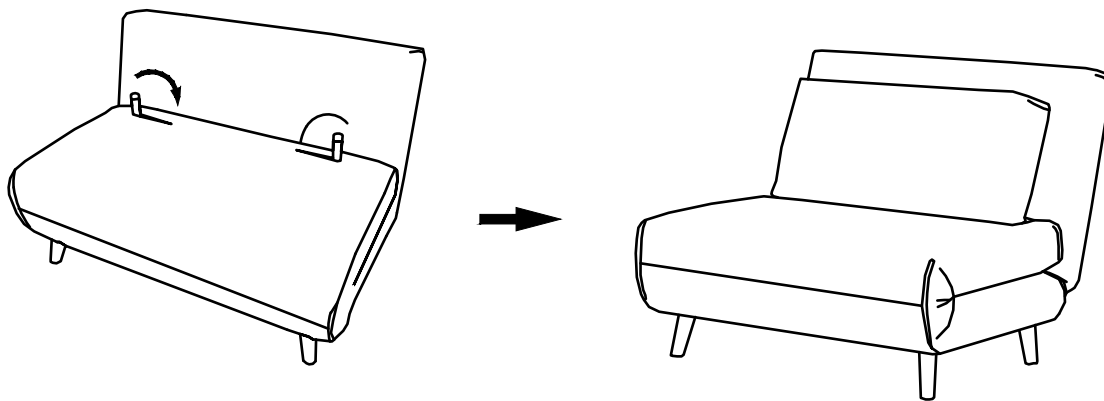
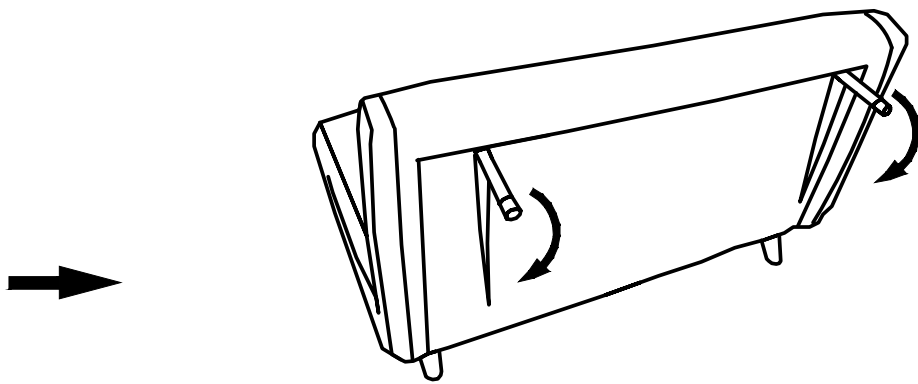
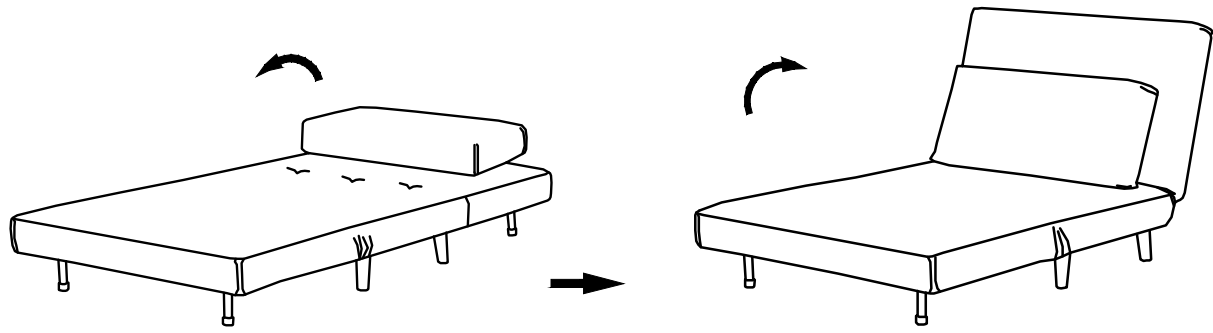
Attach 4 x legs (P2) to the bottom of sofa body(P1) with 16 x screws (H1) by using the allen key (H2).

# Step 2



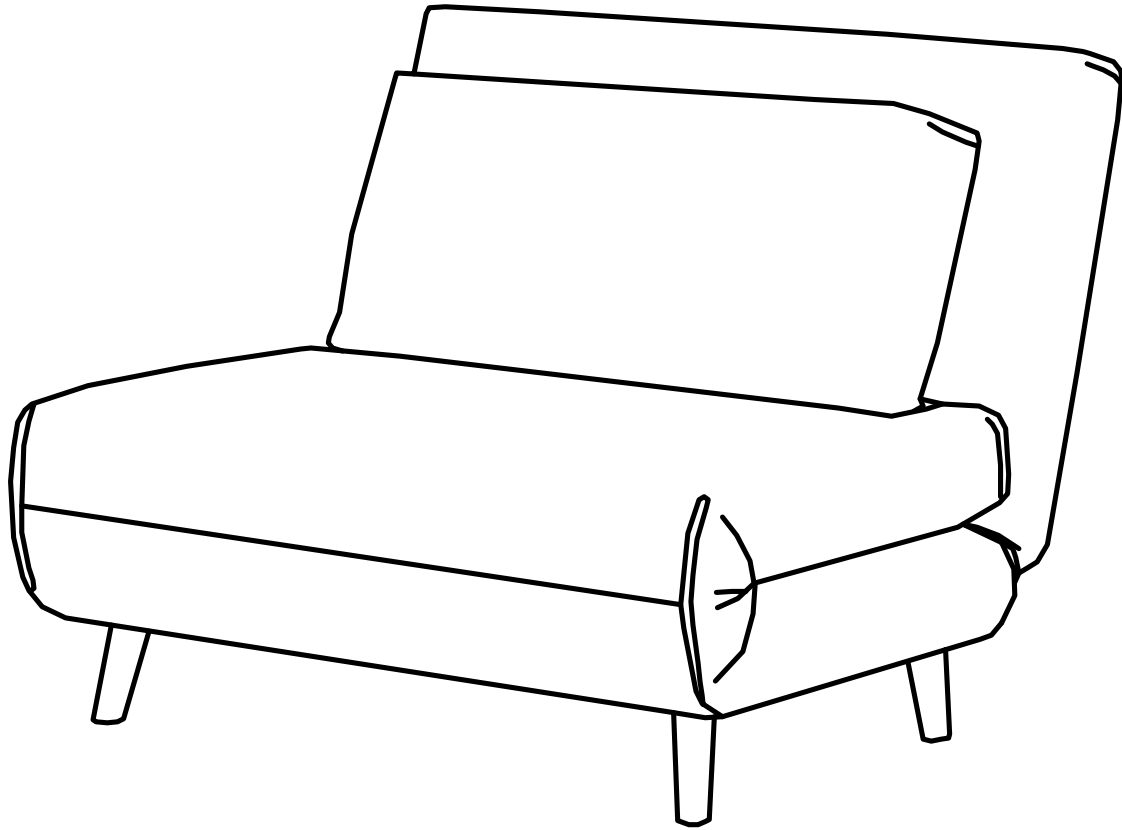
The sofa sit position conversion to supine position instructions:

# Step 3



The Sofa supine position Conversion to sit position instructions:

## Step 4

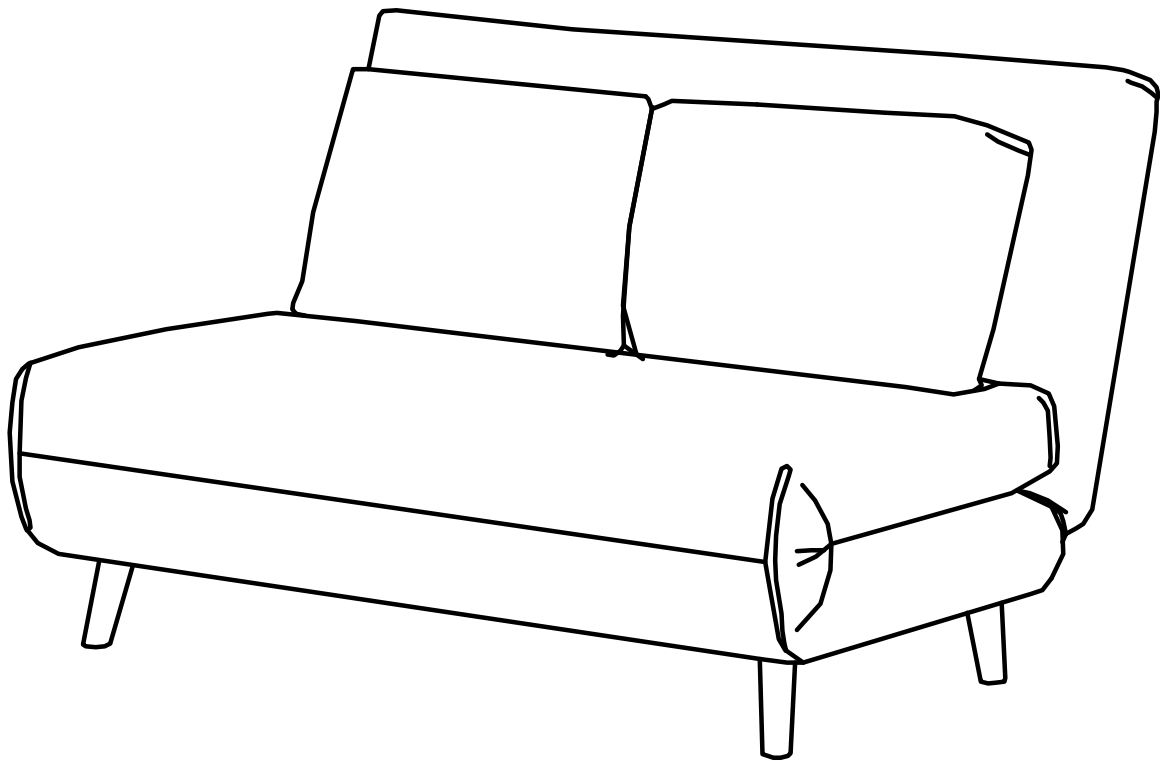


## Job Complete

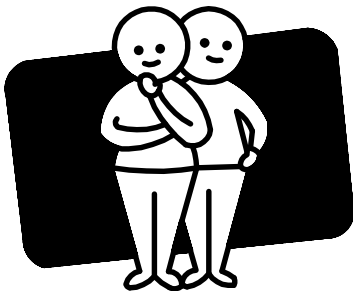
In the interest of our environment please dispose of all packaging thoughtfully.

# OMF

Version 1.0



TWO PEOPLE



REQUIRED

# RELAX

DOUBLE SOFA BED

Enjoy  
Your purchase From

**OMU**

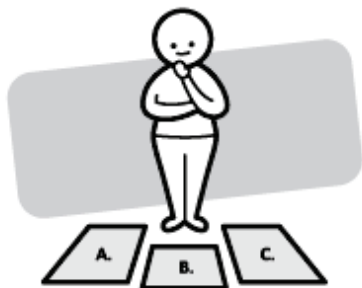
# Assembly checklist



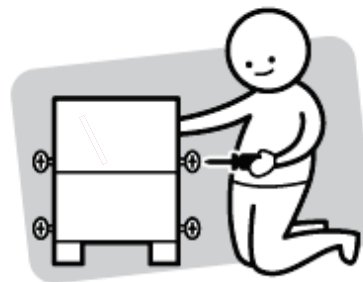
Read through the instructions carefully before you begin.



Make sure you have all the required tools. Never use power tools unless instructed.



Identify and lay out all of the components before you begin assembly.



Unless instructed, do not fully tighten screws until the item is fully assembled.

## Useful Information

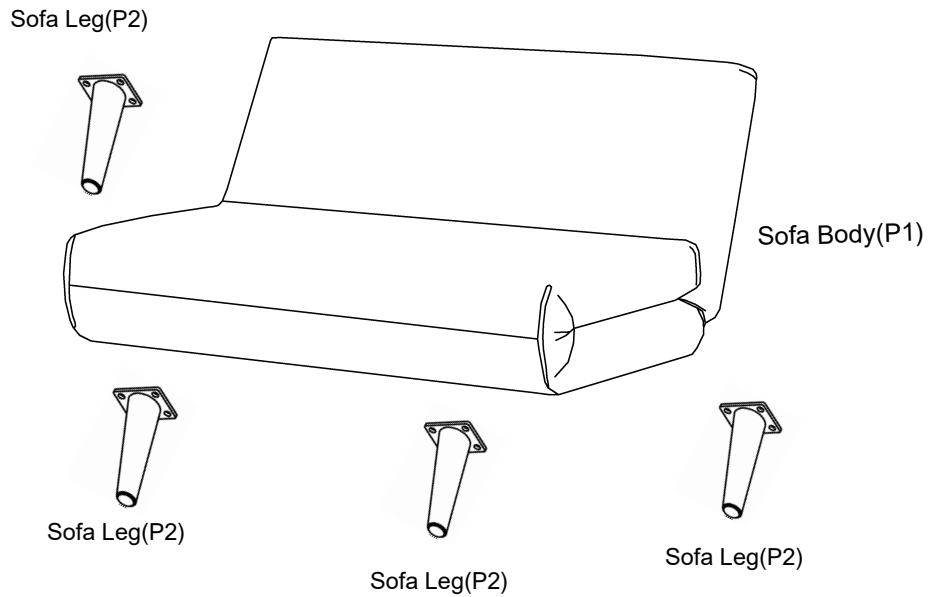
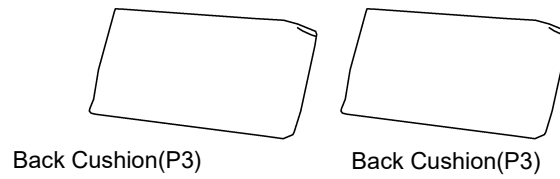
- ! Never use power tools unless specifically instructed. They can damage your components or hardware if used incorrectly.
- ! The most common mistakes made during assembly are using the wrong hardware or getting components back to front.
- ! Always use a soft surface (such as carpet or cardboard) when assembling your product to avoid scratching or damaging the surface of the product.
- ! Bulky items such as wardrobes and bunk beds should be assembled in the room they will be used in as they may not fit through a door once assembled.
- ! Never use any glue until you are certain that the parts belong together.
- ! Periodically check and re-tighten all fasteners. Check the product care label or website for product care instructions.
- ! If you are having any difficulties assembling your product, missing any hardware or components please visit our website Help Centre for further assistance.

# What you need

## to assemble the product



DO NOT USE



### Parts list

**Box 1 :** Sofa Body(P1), Sofa Leg(P2), Back Cushion(P3),



(Screws )  
16 x M6 x 20mm

(H1)



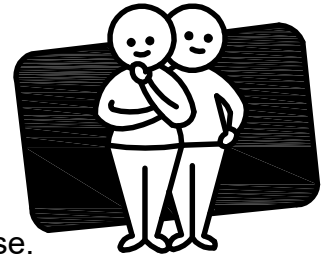
(Allen Key)  
1 x M5

(H2)



**Please make sure you have all these parts before you start**

# Step 1

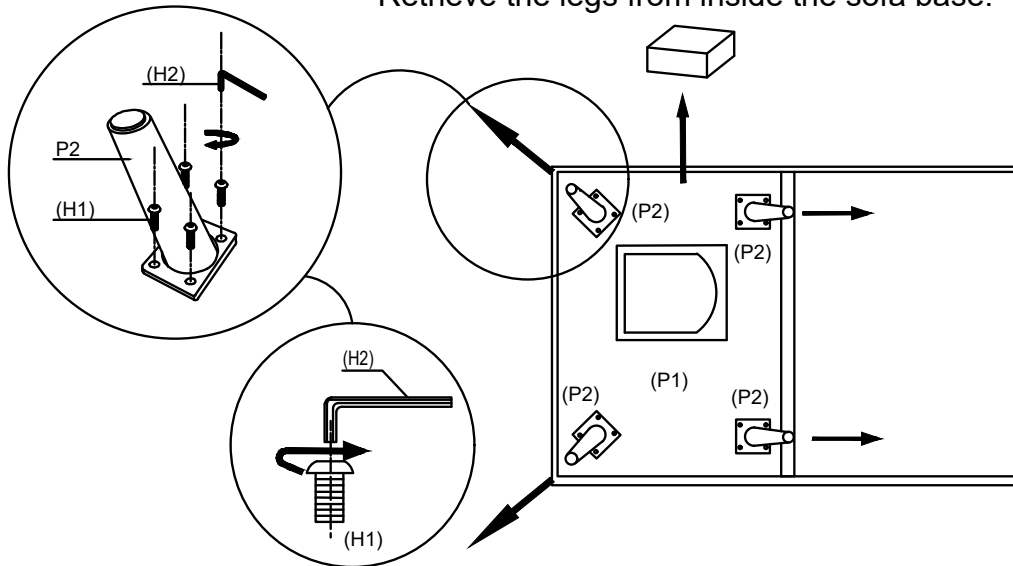
TWO PEOPLE



REQUIRED

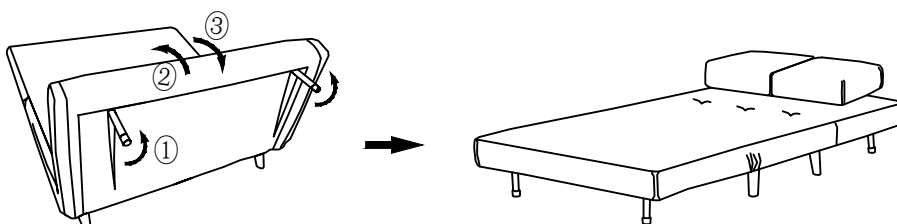
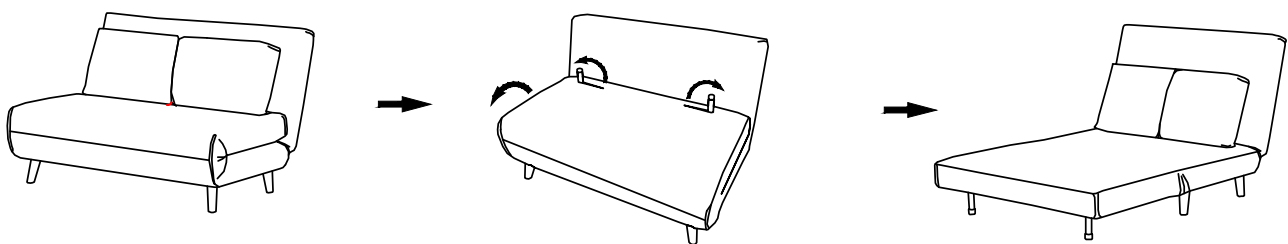
You will need	
	
16xScrews 20mm (H1)	Allen Key (H2)

Retrieve the legs from inside the sofa base.



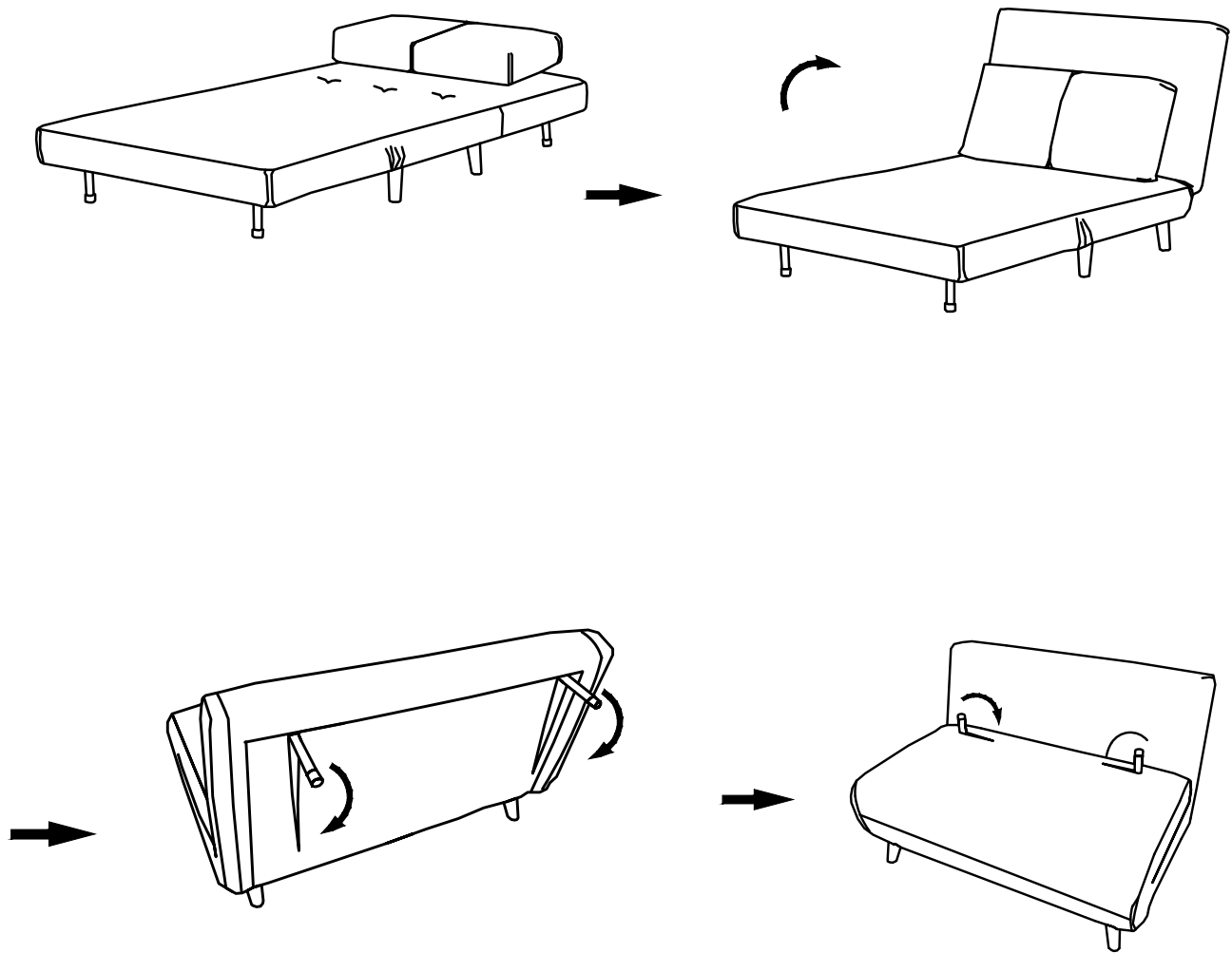
Attach 4 x legs (P2) to the bottom of sofa body(P1) with 16 x screws (H1) by using the allen key (H2).

# Step 2



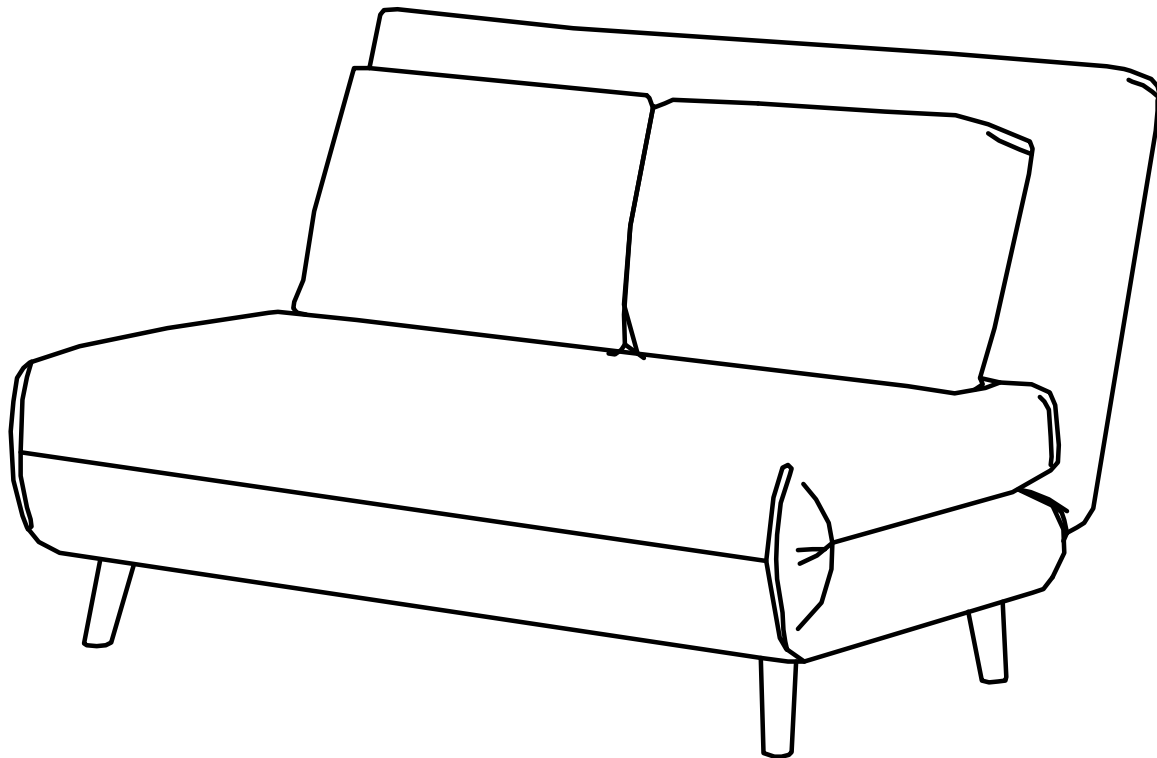
The sofa sit position conversion to supine position instructions:

# Step 3



The Sofa supine position Conversion to sit position instructions:

## Step 4



## Job Complete

In the interest of our environment please dispose of all packaging thoughtfully.